

## Model TM-492 Torque Multiplier

### 1. INTRODUCTION

This handbook covers operations and service instructions for the model TM-492 Torque Multiplier.

### WARNINGS

- To prevent accidental torque release, which could result in personal injury, the neutral positioning set screw (Fig. 1, Item 2) must be flush with the top of the housing whenever the torque multiplier is operated **MANUALLY**. The selector pawl (Fig. 1, Item 3) must also operate freely in the CW and CCW positions.
- Never** strike the selector pawl (Fig. 1, Item 3) to release wrench tension or to change directions. Serious personal injury could result. Internal damage to wrench may occur.
- Inspect output square drive (Fig. 2, Item 4) for visible sign of fatigue or fracture prior to **EACH** use. Replace if necessary (see Section 8).
- Failure of the output square drive, due to torque overload or fatigue, could result in an immediate torque release, potentially causing the torque multiplier to fall from the fastener, and result in personal injury.
- Do Not** hold torque multiplier (Fig. 2, Item 3) or reaction plate (Fig. 2, Item 1) while applying torque since normal multiplier deflection might cause fingers to be pinched; especially in confined locations.
- Always** Maintain firm hand control of torque wrench or input handle when releasing multiplier, since recoil (wind-up) will be experienced.
- The torque multiplier **requires** a special double ended reaction plate (not included), if an output drive extension is used. This type of use, without a double ended reaction anchor, could cause the torque multiplier to be forced sideways on the application, breaking the multiplier and/or socket, and possibly causing personal injury.
- Never** use air or hand driven impact tools with the torque multiplier. Damage to tool could occur.
- Since reaction torque equals **OUTPUT** torque, be sure to select an anchor point sufficient to withstand the torque reaction forces created.
- Check reaction plate holding screws (Fig. 2, Item 2) periodically to insure they are tight.

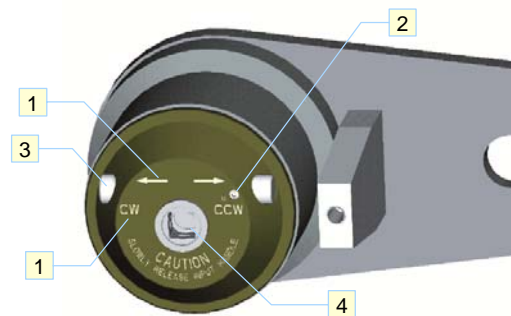
### 2. IMPORTANT INSTRUCTIONS

- Read and understand these Operating Instructions before using the Torque Multiplier.
- When using a POWER driven input, be sure the selector pawl (Fig.1, Item 3) has been locked into its neutral position using the neutral positioning set screw (Fig. 1, Item 2).
- When positioning the Torque Multiplier, be sure socket attached to the output is positioned so that the Reaction Plate is at right angles to the fastener (See Torque Multiplier Application Tips). REMEMBER: Torque reaction creates a rotational force in the opposite direction from which input force is applied.

- When using the Torque Multiplier without a torque wrench to apply input torque, remember that the **output torque** is significantly greater than the applied **input torque**.
- Use only Williams approved output square drives and replacement parts.

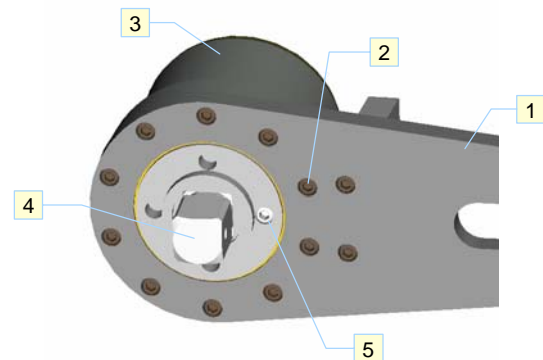
### 3. DESCRIPTION AND DESIGN FEATURES

- The TM-492 Torque Multiplier uses a planetary geared action to tighten and loosen nuts, bolts and cap screws with a continuous 360° rotation in either clockwise or counterclockwise direction. Input and output rotation directions are the same. (EXAMPLE: Input clockwise, output clockwise.) An internal, two-directional anti-backlash device prevents accidental torque wind-up release.



**Fig 1. Input End Detail**

- Rotational Direction Indicators
- Neutral Positioning Set Screw
- Selector Pawl
- 1/2" Female Square Input Drive



**Fig 2. Anchor Plate & Square Retention Detail**

- Reaction Plate
- Socket Head Cap Screw
- Torque Multiplier
- Controlled-Shear Output Square Drive
- Set Screw

- A Controlled-Shear Output Square Drive (Fig. 2, Item 4) protects internal components in the event maximum output capacity is exceeded. This overload-protection feature causes the drive to fracture when output exceeds from 3% to

10% of rated output capacity. One replacement drive is included with the Torque Multiplier. Additional replacements can be ordered from your distributor.

- 3.3 The Selector Pawl (Fig. 1, Item 3) controls the torque multiplier's rotational direction for manually-applied input. It can also be set in a neutral position for power drive unit torque applications.

## 4. SPECIFICATIONS

Output Capacity Lbf-ft (N-m)	2,200 (2,983)
Input Capacity Lbf-ft (N-m)	162 (220)
Gear Ratio	15:1
Torque Ratio (Avg.)	13.6:1
Output Drive Male Square Size Inches (mm)	1 (25.4)
Input Drive Female Square Size Inches (mm)	1/2 (13)
Overall Dimensions Inches (mm)	A 14 (356) B 4-7/8 (124) C 5-1/2 (140)
Net Weight Lbs. (kg)	17.2 (7.8)
Planetary Gearing Stages	Two
Needle Bearings	Yes
Angle-of-turn Protractor	No
Torque Conversion Chart	Yes
Shearable Replaceable Output Drive	Yes
Reaction Anchor Type	Plate

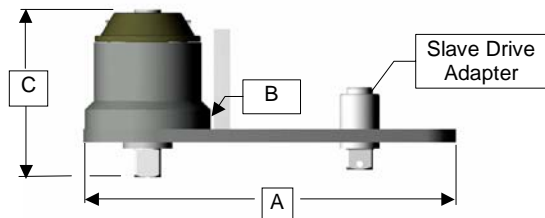


Fig. 3 Overall Torque Multiplier Dimensions

## 5. TORQUE CONVERSIONS

- 5.1 A data plate is attached to the torque multiplier which displays the input torque required to obtain the listed output torque values. If you wish to calculate a specific input value that isn't listed on the attached chart, divide the desired output torque by 13.6 to determine the input torque value required (e.g. 1360 Lbf-ft Output ÷ 13.6 = 100 Lbf-ft input torque).

## 6. MANUAL OPERATION

- 6.1 For manually applied Input: Set the desired rotation direction by pushing the Selector Pawl (Fig. 1, Item 3) in the direction indicated by the letters and directional arrows (Fig. 1, Item 1) stamped on the input end case. EXAMPLE: If counter-clockwise rotation is desired, push Pawl to end of travel in the

direction shown by the "CCW" arrow. For clockwise rotation, push Pawl in the opposite direction (See **Warnings**).

- 6.2 Mount the proper size square female drive socket onto the Torque Multiplier Output Square Drive (Fig. 2, Item 4), then position Socket and Multiplier on the fastener to be tightened. Remember: When socket is properly positioned on fastener, Reaction Plate must be at right angles to the fastener to which torque is being applied (See Torque Multiplier Application Tips).
- 6.3 Butt the Reaction Plate securely against a suitable object (See Torque Multiplier Application Tips) or attach a second socket to the slave drive adapter (Fig. 3) and react the applied torque on an adjacent nut.
- 6.4 **To Tighten Manually with Torque Wrench:** Refer to Torque Data Plate on body of Torque Multiplier to determine proper input to obtain the desired output. Torque output accuracy requires the use of an accurate torque wrench in series with the Torque Multiplier. REMEMBER: Controlled-Shear Output Square Drive will fracture if output torque exceeds the rated output capacity (See **Warnings**). Apply torque with torque wrench until desired input torque is achieved.
- 6.5 **To Remove Torque Multiplier From Fastener:** Apply enough input torque to release internal anti-backlash device, then push selector pawl (Fig. 1, Item 3) into opposite position (EXAMPLE: If selector pawl is in the clockwise CW position for tightening, apply input torque in the CW direction to relieve force on the pawl. While maintaining input torque in the CW direction, slide pawl into the CCW direction for release) and slowly relax input torque. Never strike selector pawl to release or change directions (See **Warnings**).
- 6.6 **To Loosen:** Follow same procedure as for tightening except set Selector Pawl in opposite position. (EXAMPLE: If fastener requires clockwise tightening rotation, set Pawl in counter-clockwise position for loosening.)

## 7. PNEUMATIC OPERATION

- 7.1 If you decide to use a non-impact power drive to speed up the process of tightening or loosening a fastener, you MUST remember to lock the selector pawl in the neutral position. Center the selector pawl (Fig. 1, Item 3) between the CW/CCW range of the travel and tighten the set screw (Fig. 1, Item 2). When properly positioned, the screw will be seated in a groove in the selector pawl, so the pawl cannot be moved in either direction. Take care that the power drive is set to deliver no more than the maximum required input torque (See Torque Multiplier Application Tips for additional power drive information).

## 8. REPLACING A SQUARE DRIVE ASSEMBLY

- 8.1 Remove the set screw that is on the face of the Square Drive Carrier (Fig. 1, Item 5).
- 8.2 Rotate the tool so that the set screw faces down; this will allow the square drive retention pin to disengage the Square Drive Assembly. Pull out the old Square Drive Assembly.
- 8.3 Insert the new Square Drive Assembly, making certain that the hole in the new Square Drive Assembly lines up with the hole in the Square Drive Carrier.
- 8.4 Insert dowel pin in Square Drive Carrier, insuring that the pin engages the hole in the replacement Square Drive.
- 8.5 Firmly reattach the set screw into the Square Drive Carrier.

## Torque Multiplier Application Tips

### 1. INTRODUCTION

This section covers general torque multiplier usage. Some of the illustrations and information may not apply to your specific torque multiplier or application.

### 2. TORQUE MULTIPLIER REACTION

2.1 There are many different ways of absorbing torque multiplier reaction forces. Although the methods are as varied as the applications, there are common practices that should be taken into consideration.

2.2 The first item to consider is the size and type of torque tool required for the application. Survey space limitations as well as the maximum torque needed. Be sure to allow a minimum of 50% additional capacity in the tool for breakaway torque. Damaged and corroded fasteners can require even greater breakaway torque capacity. Allow a minimum of 100% over the make-up torque for these conditions.

**Example:** A heat exchanger with corroded studs and a 1,500 Ft-Lbs. make-up torque. Choose a tool with a capacity of at least 3,000 Ft-Lbs. for breakaway.

2.3 Be sure that the anchor point is solid and has minimum deflection.

2.4 Determine where the reaction anchor forces are going to take place (e.g. against a flange or over an adjacent bolt). Make sure that this point can withstand the torque tool's reaction forces. For example consider a 3,200 Ft-Lb. torque multiplier, with reaction near the end of its anchor stub (figure 1). This will produce a reaction force of about 6,400 pounds. By moving the reaction to the end of the anchor tube, the force is reduced to about 2,400 pounds. Keeping the reaction point tangent to the rotation of the torque output is necessary to prevent the resultant forces from increasing even more (figures 2 and 3).

2.5 Keep output torque rotation as pure as possible by reducing bending moments. Bending moments decrease torque efficiency, reduce the torque applied to the application and are hard on the tool and sockets. This can be done by taking torque reaction as far out on the reaction anchor as possible. Also keep the distance between the tool's output and the fastener as short as possible (figure 2).

2.6 Keeping these factors in mind when devising a torque reaction system will help increase tool life and create a much safer working environment.

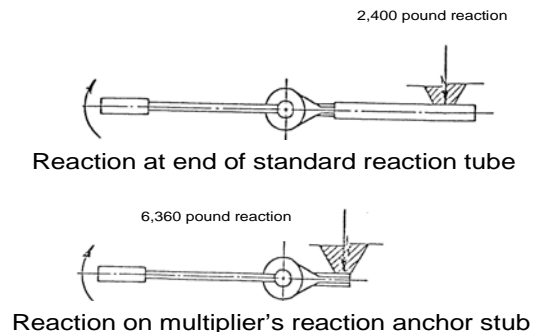
### 3. POWERED APPLICATION

3.1 When using air, electric or hydraulic tools to power torque multipliers, many variables must be considered before accurate results can be expected.

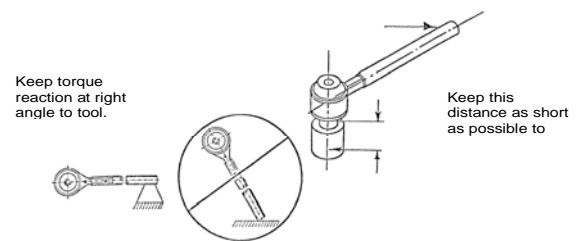
**CAUTION:** Impact type air tools should never be used with torque multipliers. Torque multiplier damage could occur.

3.2 Air tools operate best when clean, dry, well-lubricated air is used. The use of an air filter, lubricator and

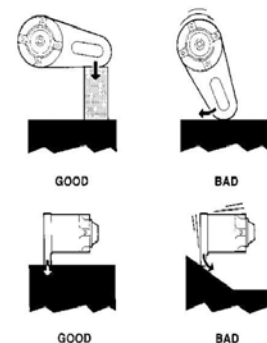
regulator are a must for reliable operation. It is also important to maintain enough airflow from the compressor's receiver. If the airflow (CFM) rating drops below that expected by the air tool, lower than anticipated torque output may result.



**Figure 1**  
Reaction forces increase the closer the reaction point is to the multiplier.



**Figure 2**  
Minimize bending moments created by the torque multiplier's reaction.



**Figure 3**  
Keep reaction anchor perpendicular to the reaction point.

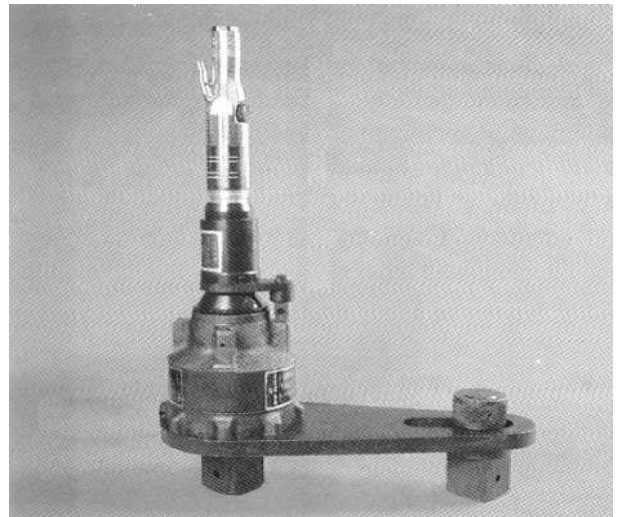
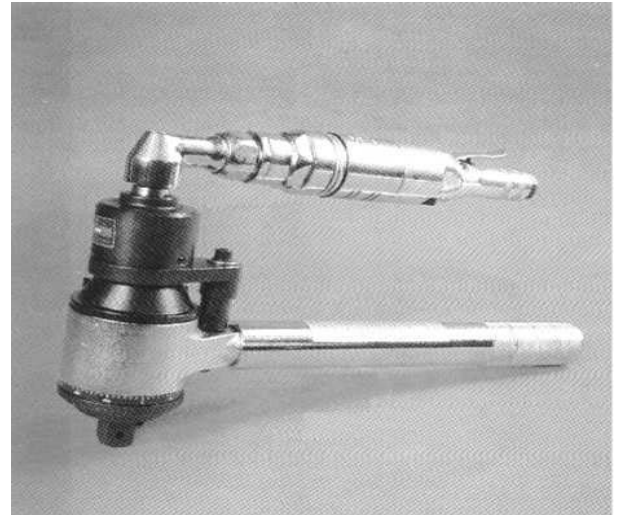


- 3.3 The simplest way to control the torque output is by regulation of the air pressure supplied to the air motor. The more accurate the air pressure control, the more reliable the torque control.
- 3.4 Attach an air pressure regulator as close to the air tool as possible. This will reduce pressure variations due to changes in air hose length & diameter or changes in quick disconnects and pipe fittings.
- 3.5 Dirty or corroded fastener threads can cause large fluctuations in the applied torque. It is recommended that a high quality lubricant be applied to the fastener threads as well as all other surfaces that rub. This will reduce losses in torque efficiency.
- 3.6 Changes in momentum of the air tool are the greatest cause of output torque variations. The higher the tools speed the greater the effects of momentum.
- 3.7 A soft stack-up has a large amount of application run-down time due to long studs, flat/lock washers, gaskets, etc. This will cause the air tool to run a longer time before reaching the desired torque. This decreases air motor momentum and decreased the applied torque. Conversely, a hard stack-up has a short run-down time due to short studs, very rigid application, etc. This will reach the desired torque very quickly, applying a greater torque to the fastener.
- 3.8 Angle nutsetters and inline air tools each have distinct advantages and disadvantages.
- 3.9 An inline air tool has the advantage of being fastened to the torque multiplier rigidly by bolting. This allows the operator to handle a single piece of equipment and the input torque reaction is absorbed by the bolted connection. The chief disadvantage is the tools height.
- 3.10 An angle nutsetter has the advantage of a lower tool profile but requires the tool operator to react the angle nutsetter's torque output. This reaction torque can be quite large (up to 200 Lb-Ft of torque) The reaction torque and the size of the air tool required can be reduced to under 40 Lbf-Ft by the use of an optional accessory gear box attached to the input of the torque multiplier. Although this does increase the tool height slightly, it is still lower in height than an inline tool.
- 3.11 If the angle nutsetter and torque multiplier are sized for the make-up torque required, a medium output (85 - 110 Ft-Lb.) angle nutsetter can be used. This combination will maximize the air tool speed while reserving some torque multiplier capacity for higher breakout torques. If necessary the fasteners can be broken loose manually, then run off can be completed using the air tool.

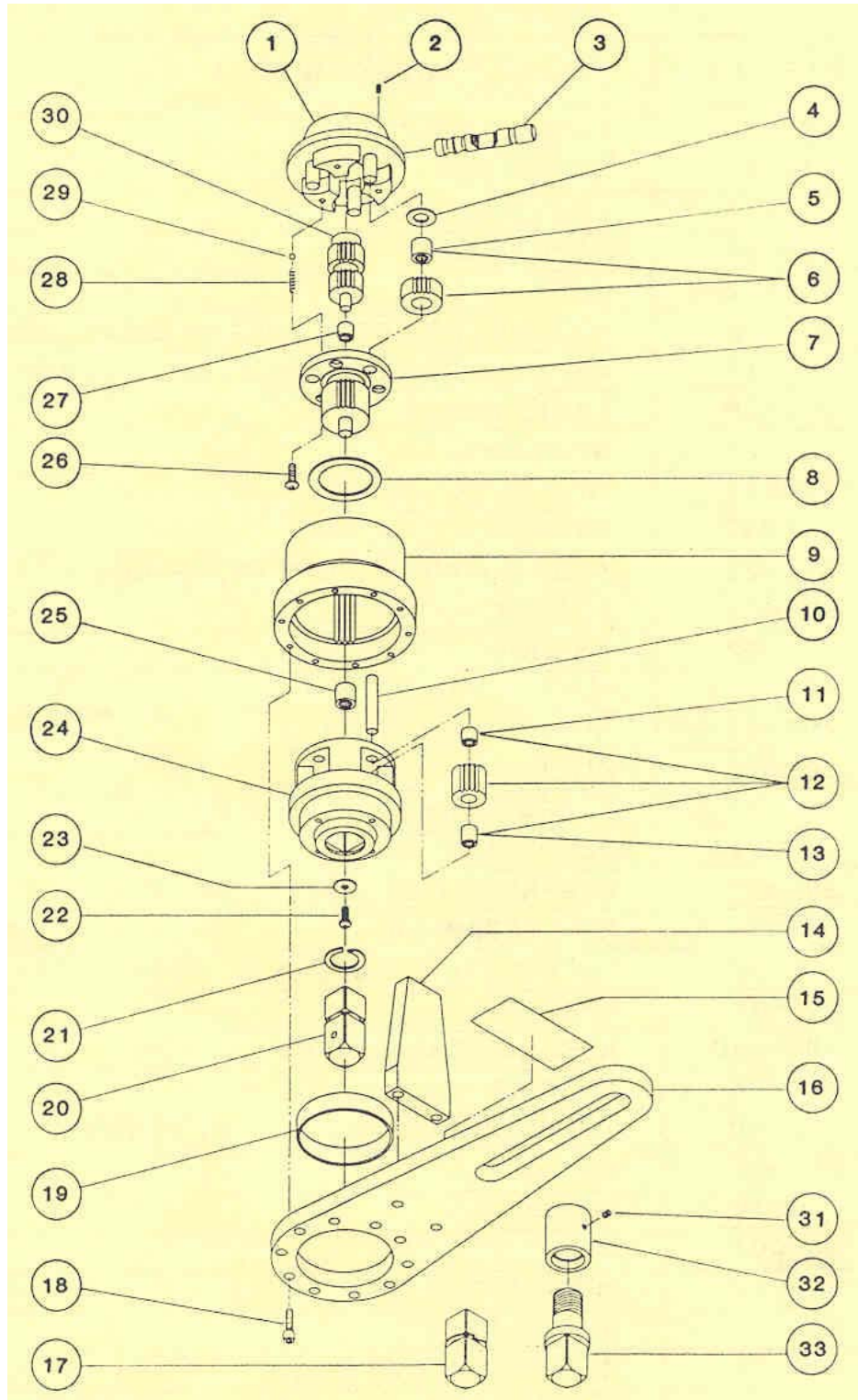
#### 4. ANGLE OF TURN PROTRACTOR

- 4.1 Some torque multipliers include an Angle of Turn Protractor, which allows the operator to accurately measure a specific number of degrees of rotation of the fastener. The torque / angle of turn method of tightening fasteners requires a pre-torque value, and

a specific additional rotation of the fastener, that is engineered into the application. This data will be supplied by the original equipment manufacturer's engineering department if angle of turn torquing is applicable.



**Figure 4**  
**Torque multipliers with air motors attached for powered application.**



ITEM NO.	PART NUMBER	DESCRIPTION	QTY
1	392-11	ASSEMBLY, INPUT END	1
2	A000155798001	SCREW, SET	1
3	392-14	PAWL, SELECTOR	1
4	906052	RACE, THRUST	3
5	904113	BEARING	3
6	393-18	ASSEMBLY, INPUT PLANET (W/BEARING)	3
7	392-17	ASSY, SECONDARY PINION (W/BEARING)	1
8	906055	NOT USED	1
9	492-31	GEAR, RING	1
10	A000141054001	PIN, DOWEL	4
11	904057	BEARING	4
12	392-25	ASSY, OUTPUT PLANET (W/BEARINGS)	4
13	904066	BEARING	4
14	492-62	ANCHOR	1
15	TM-492-200	PLATE, NAME/DATA	1
16	493-61	ANCHOR, REACTION	1
17	TM-392RSD	KIT, SQUARE DRIVE	1
18	A000151787001	SCREW, SOCKET HEAD CAP	12
19	493-611	BUSHING	1
20	392-72	SUB-ASSEMBLY, SQUARE DRIVE	1
21	A000070026031	RING, RETAINING	1
22	A000151594001	SCREW, NYLOK BUTON H. SOCKET CAP	1
23	392-63	SPACER	1
24	492-21	CAGE, GEAR	1
25	904084	BEARING	1
26	A000151461001	SCREW, BUTTON HEAD SOCKET CAP	3
27	904057	BEARING	1
28	950019	SPRING	1
29	900001	BALL	1
30	392-13	PINION, INPUT	1
31	A000155099001	SCREW, SET	1
32	493-711	RETAINER, SLAVE DRIVE	1
33	493-710	DRIVE, SLAVE	1