



J.H. Williams Tool Group
6969 Jamesson Road,
Midland, GA 31820

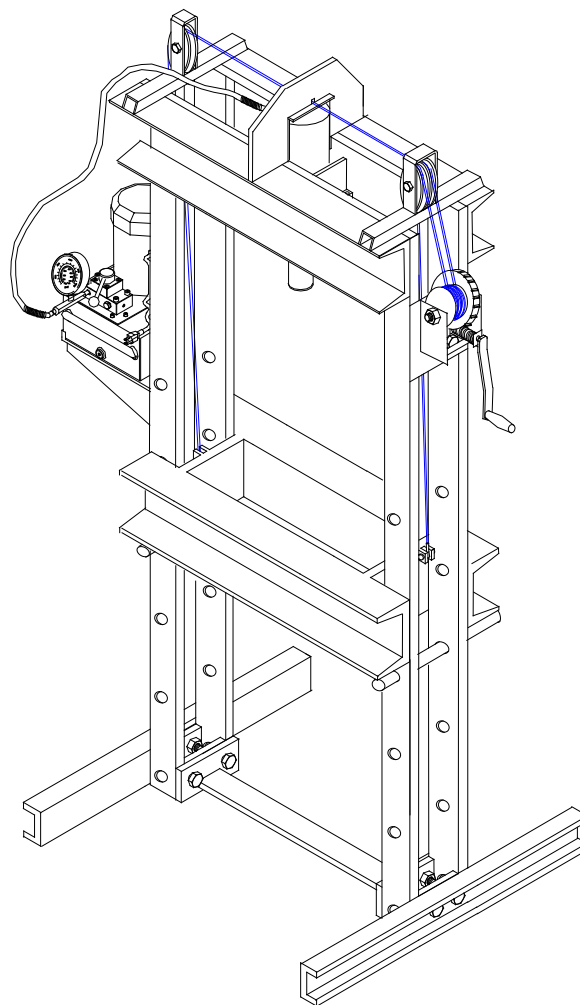
OWNER/ OPERATOR MANUAL

Shop Press

MODEL: 9E100T10

Rated Capacity: 10 Tons

Max. Operating Pressure 10,000 PSI



Save these instructions. For your safety, read and understand the information contained within. The owner and operator shall have an understanding of this product and safe operating procedures before attempting to use this product. Make certain that the operator thoroughly understands the inherent dangers associated with the use and misuse of the product. If any doubt exists as to the safe and proper use of this product as outlined in this factory authorized manual, remove from service immediately.

Inspect before each use. Do not use if broken, bent, cracked or otherwise damaged parts are noted. If any component of this product has been or suspected to have been subjected to a shock load (a load dropped suddenly, unexpectedly upon it), discontinue use until checked out by a BVA Hydraulics Authorized Service Center. Owners and operators of this equipment shall be aware that the use and subsequent repair of this equipment may require special training and knowledge. It is recommended that an annual inspection be done by qualified personnel and that any missing or damaged parts, decals, warning / safety labels or signs be replaced with factory authorized replacement parts only. Any component of this Equipment that appears to be damaged in any way, is worn or operates abnormally shall be removed from service immediately until such time as it can be repaired/replaced. Labels and Instruction Manuals are available from manufacturer.

PRODUCT DESCRIPTION

BVA Hydraulics Shop press is designed for automotive, truck, implement, fleet, and industrial repair shops where pressing, bending, straightening, forming, holding is required. The press includes:

- 2-gal, 1HP Electric pump that extends the ram and is easy operated
- 100 Ton Cylinder with 10 inch stroke
- Winch assembly which provides a safe and fast way to raise and lower the bed frame
- Pressure gauge which provides for monitoring the applied press force

Typical applications include installation and removal of alternator and power steering pump bearings, axle bearings, transmission bearings, seal, driveshaft bearings and u-joints and others. It is not intended for use as an assembly table or as fixture stand used to secure a large, final assembly component. Please refer to Cylinder and Electric pump manuals for more information.

SPECIFICATIONS

Model	Load Capacity	Ram Stroke	Bed Width	Press Size (H x W x L)	Min. Working Space	Max. Working Space	Max. Rated Pressure
9E100T10	100 Ton	10"	16-1/4"	29-1/2" x 63" x 30"	11-1/4"	51"	10,000 psi

SAFETY INSTRUCTIONS

▲ WARNING

- Study, understand, and follow all instructions provided with and on this device before operating this device.
- Do not exceed rated capacity.
- Burst hazard exists if hose or connection pressure exceeds rated pressure.
- Use the device only on a hard, level surface.
- Always monitor the pressure gauge while operating.
- Always inspect hoses and connections for damage prior to use.
- Always wear safety goggles when working on or near this equipment.
- Keep hands, feet and all other body parts away from loading area.

▲ WARNING

- Never leave loaded press unattended.
- Center load workpiece to help prevent objects propel from the press.
- Install safety shield around workpiece whenever possible to protect against flying objects if workpiece fractures under load.
- Do not modify this device.
- Ensure the user is familiar with the controls and operational characteristics of this product and aware of the potential hazards associated with its use.
- Failure to heed these markings may result in personal injury and/or property damage.

BEFORE USE

1. Inspect before each use. Do not use if bent, broken or cracked components are noted. Check for and tighten any loose assemblies.
2. Verify that the product and the application are compatible, if in doubt call BVA Technical Service.
3. Before using this product, read the operator's manual completely and familiarize yourself thoroughly with the product, its components and recognize the potential hazards associated with its use.

ASSEMBLY

(refer to figures 1 & 2)

1. Install the winch assembly on side of press that has two pulleys on top of upper cross member using 3 bolts, washers and nuts.
2. Ensure bed frame at lowest position and winch cable is slack.
3. Secure cylinder to the cylinder adapter plate, and mount the cylinder adapter plate to upper cross member using 4 bolts and washers.
4. Attach base sections to upright channels with 4 bolts and nuts.
5. Attach lower cross member to upright channels with 4 bolts and nuts.
6. Connect the pressure gauge and the hydraulic hose to the gauge adapter, then connect the gauge adapter to pump.

Important: Ensure thread tape or compound is use on connections.

7. Place the pump on the pump bracket on the side of press and connect the other end of hydraulic hose to ram.

Caution: Before disassembly, slide bed frame section down, into its lowest position.

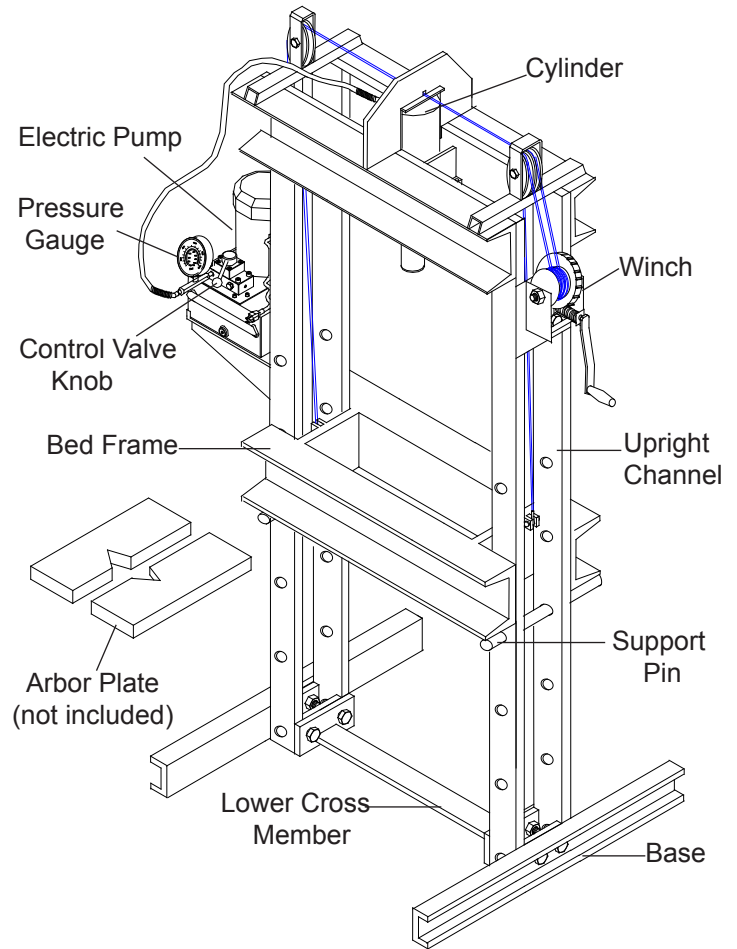


Figure 1 - Model IEP10010 Components

OPERATION

please refer to **BVA Electric Pump manual** for the electric pump operation

1. Insert the support pins to desired height, then lower the bed frame using the winch until the cable is slack and the bed frame is resting fully on the support pins.
2. Place arbor plates on the bed frame. (optional)
3. Inset workpiece into bed frame, using every precaution necessary to ensure your safety and prevent property damage.
4. Turn the ON/OFF switch to start the electric pump and let the pump idle for a few minutes before put into operation.
5. Use control valve knob to extend or retract the cylinder.
6. Apply load to workpiece. **Do not overload the workpiece**
7. Stabilize workpiece in a manner which will not allow it to inadvertently fall from the bed once the load is removed.
8. Once cylinder has fully retracted, remove workpiece.

MAINTENANCE

Please refer to **BVA Electric pump owner's manual** for the electric pump maintenance and how to **add/change hydraulic oil**. For best results, change the oil once a year. Use only good quality hydraulic oil. We recommend BVA hydraulic oil, Mobil DTE16M or equivalent.

Lubrication

A periodic coating of light lubricating oil to pivot points and hinges will help to prevent rust and assure assemblies move freely.

Storage

Depressurize the hydraulic system, disconnect the hydraulic hose and lower the bed frame to lowest position.

TROUBLESHOOTING

Symptom	Possible Causes	Corrective Action
Motor will not start	<ul style="list-style-type: none"> • No power or wrong voltage • Damaged power cord • Tripped circuit breaker • Loose or faulty wiring 	<ul style="list-style-type: none"> • Check the power supply & voltage • Contact Customer Service • Make sure breaker is of adequate size. • Contact Customer Service
Erratic ram action	<ul style="list-style-type: none"> • Air in system or pump cavitation • External leak • Internal hydraulic leak 	<ul style="list-style-type: none"> • Follow pump instructions for bleeding air • Tighten all connections. • Contact Service Center
Pump or ram fails to maintain pressure	<ul style="list-style-type: none"> • Overload condition • External leak • Internal hydraulic leak • Cylinder seals leaking • Pump or valve malfunctioning 	<ul style="list-style-type: none"> • Remedy overload condition • Tighten all connections. • Contact Service Center • Contact Service Center • Check pump operating instructions
Cylinder extends partially	<ul style="list-style-type: none"> • Hydraulic oil level too low in pump • Load is above the capacity of system • Cylinder is sticking or binding 	<ul style="list-style-type: none"> • Fill and bleed the system • Use the correct equipment • Contact Service Center
Cylinder moves slower than normal	<ul style="list-style-type: none"> • Loose connection or coupler • Restricted hydraulic line or fitting • Pump not working correctly • Cylinder seals leaking 	<ul style="list-style-type: none"> • Tighten connection or coupler • Clean and replace if damaged • Check pump operating instructions • Replace cylinder
Cylinder leaks hydraulic fluid	<ul style="list-style-type: none"> • Worn or damaged seals 	<ul style="list-style-type: none"> • Contact Service Center
Cylinder will not retract or retracts slower than normal	<ul style="list-style-type: none"> • Linkage binding • Loose couplers • Malfunctioning coupler • Weak or broken retraction springs • Cylinder damaged internally • Pump reservoir too full 	<ul style="list-style-type: none"> • Lubricate all moving parts • Tighten couplers • Depressurize pump and hose, remove application, then replace a new one. • Contact Service Center • Contact Service Center • Drain hydraulic fluid to correct
Motor cuts out	<ul style="list-style-type: none"> • Extension cord too long • Faulty motor • Overheated motor can trip circuit breaker 	<ul style="list-style-type: none"> • Replace with shorter cord • Replace or repair • Allow motor to cool, reset circuit breaker

LIFETIME LIMITED WARRANTY

BVA Hydraulics®, represented in the United States by SFA Companies ["SFA"] warrants this product to be free from defects in material and workmanship for the life of the product as long as the original purchaser owns the product. The warranty is non-transferable and is subject to the terms, exclusions, and limitations described below:

- Damaged components, including but not limited to bent rams, dented or crushed cylinder walls, broken welds or couplers as well as worn out seals, o-rings and springs are the result of misuse and not covered by warranty and BVA Hydraulics will not provide any warranty credit for such damaged components.
- This warranty does not cover ordinary wear and tear, overloading, alterations (including repairs or attempted repairs not performed by BVA Hydraulics or one of its authorized personnel), improper fluid use, or use of the product in any manner for which the product was not intended or the use of which is not in accordance with the instructions or warnings provided with the product.
- In the unlikely event that a BVA Hydraulics product fails due to material defect in workmanship, you may contact SFA Companies for disposition. In such cases, the customer's sole and exclusive remedy for any breach or alleged breach of warranty is limited to the repair or replacement of the defective product.
- Under no circumstances is BVA Hydraulics liable for any consequential or incidental damage or loss whatsoever.
- THIS WARRANTY IS LIMITED TO NEW PRODUCTS SOLD THROUGH AUTHORIZED DISTRIBUTORS AND OTHER CHANNELS DESIGNATED BY BVA HYDRAULICS. NO AGENT, EMPLOYEE OR OTHER REPRESENTATIVE OF BVA HYDRAULICS IS AUTHORIZED TO MODIFY THIS WARRANTY.
- THE FOREGOING IS EXCLUSIVE AND IS IN LIEU OF ALL OTHER EXPRESS AND IMPLIED WARRANTIES, INCLUDING BUT NOT LIMITED TO THE IMPLIED WARRANTIES OF MERCHANTABILITY AND FOR A FITNESS FOR A PARTICULAR PURPOSE.
- Components not manufactured by BVA Hydraulics including certain motor systems, gasoline engines, and other are not covered by this warranty and instead are covered by the manufacturer's separate manufacturer's warranty provided in the package.

Note: To ensure safe and reliable performance, replace worn or damaged parts with BVA Hydraulics Authorized Replacement Parts only. For best performance and long equipment life, replace the pump's fluid supply at least once per year. **To protect your warranty and ensure proper performance**, use good quality hydraulic fluid, we recommend BVA Hydraulic Oil, Mobil DTE 16M or equivalent.

REPAIR PARTS SHEET

Note: Not all components of the cylinder are replacement items, but are illustrated as a convenient reference of location and position in the assembly sequence. To ensure safe and reliable performance, replace worn or damaged parts with Williams authorized repair parts only.

Parts Illustration

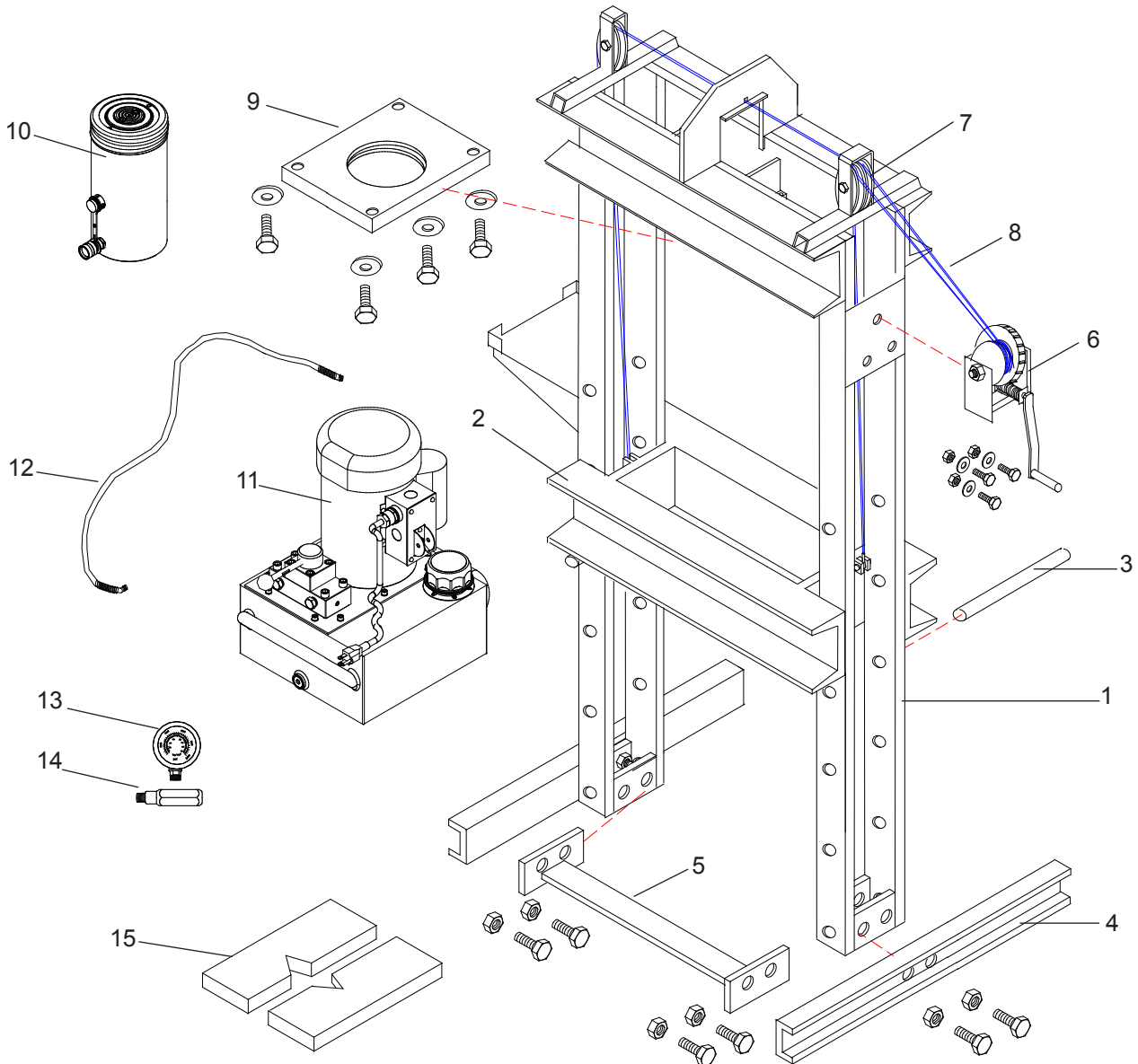


Figure 2- Replacement Parts Illustration for Model 9E100T10



J.H. Williams Tool Group
6969 Jamesson Road,
Midland, GA 31820
1-866-460-7995

REPAIR PARTS SHEET

Note: Not all components of the cylinder are replacement items, but are illustrated as a convenient reference of location and position in the assembly sequence. To ensure safe and reliable performance, replace worn or damaged parts with Williams authorized repair parts only.

Parts List

Item	Part#	Description	Qty
1	610-002-001	Press Frame with Winch Assembly	1
2	610-002-002	Bed Frame	1
3	610-002-003	Support Pin	2
4	610-002-004	Base	2
5	610-002-005	Lower Cross Member	1
6	610-002-006	Winch	1
7	610-002-007	Pulley	3
8	610-002-008	Cable	1
9	610-002-009	Cylinder Adapter Plate	1
10	H10010	10 Ton Cylinder, 10" Stroke	1
11	PE1002	Electric Pump, 2 gal	1
12	CS3838	Hydraulic Hose, 3/8"ID, 3/8"-18NPT Fitting	1
13	GW4014	Wet Pressure Gauge, 4", 10,000psi	1
14	CF3814	Gauge Adapter	1
15	HW93246	Arbor Plate, 100Ton	1
-	IEP10010-L0	Label	-
-	IEP10010-M0	Manual	-

NOTES:
